

MONTHLY MEMBERSHIP PROGRESS REPORT

LOCATION MASSACHUSETTS

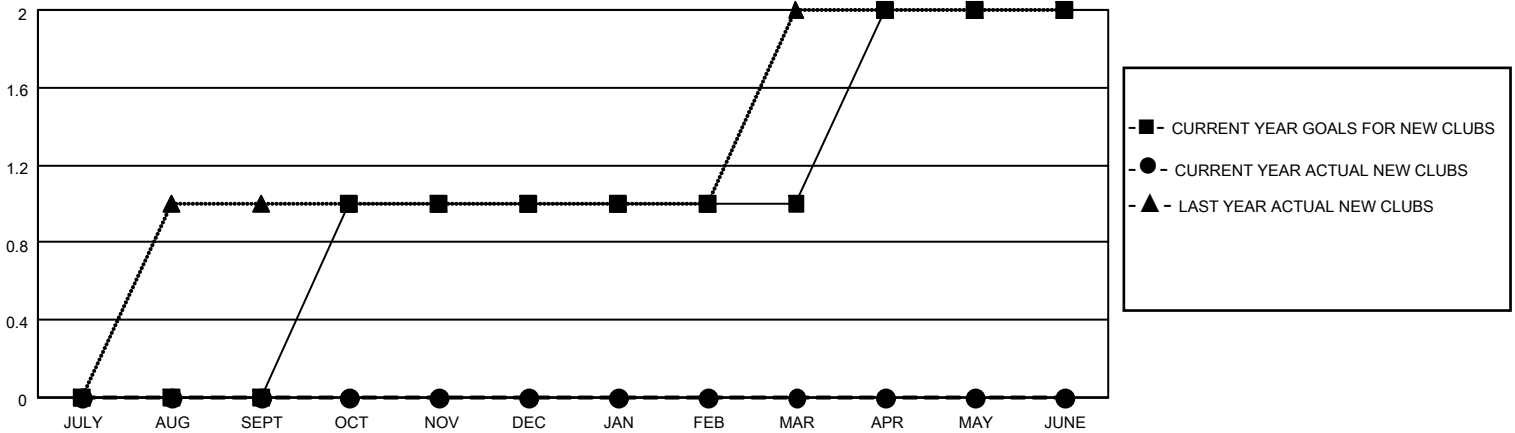
District 33 S

Results as of: 5/31/2022

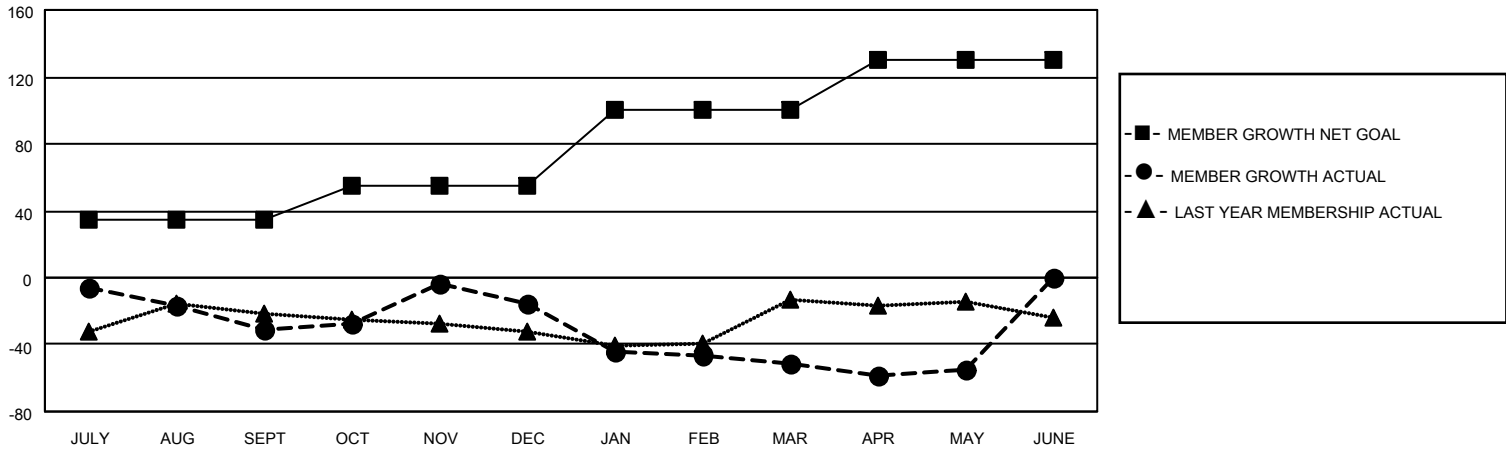
Clubs			
RESULTS FOR 2021-2022			
QUARTER	NEW CLUB GOAL	NEW CLUBS	DROPPED CLUBS
JULY/AUG/SEPT	0	0	1
OCT/NOV/DEC	1	0	0
JAN/FEB/MAR	0	0	0
APR/MAY/JUNE	1	0	0

Members			
RESULTS FOR 2021-2022			
QUARTER	MEMBER GROWTH NET GOAL	MEMBER GROWTH ACTUAL	DROPPED MEMBERS ACTUAL (including transfers)
JULY/AUG/SEPT	35	15	44
OCT/NOV/DEC	20	45	29
JAN/FEB/MAR	45	11	44
APR/MAY/JUNE	30	23	25

GOALS AND ACTUAL NEW CLUBS CUMULATIVE



GOALS AND ACTUAL MEMBERS CUMULATIVE



DROPPED CLUBS: 1

23 CLUBS OF 49 ADDED 1 OR MORE NEW MEMBERS

GENDER DISTRIBUTION

MALE	965 (61.54%)
FEMALE	602 (38.39%)
NON BINARY	0 (0.00%)
PREFER NOT TO ANSWER	1 (0.06%)

DROPPED MEMBERS

[CLICK HERE FOR CUMULATIVE MEMBERSHIP DATA](#)

DECEASED	27
CLUB CANCELLED	0
OTHER	115
TOTAL	142

TOTAL FAMILY UNIT MEMBERS	270
FAMILY MEMBERS PAYING HALF DUES	138